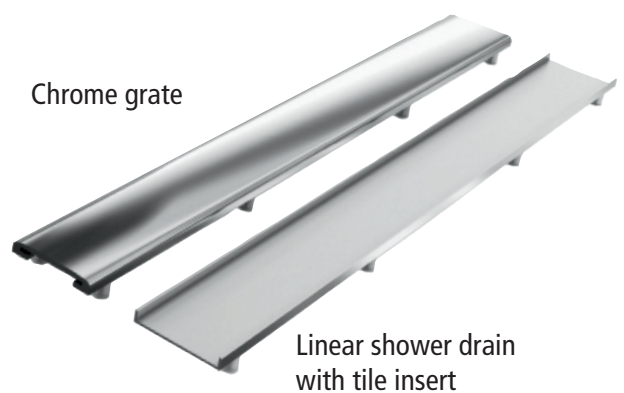
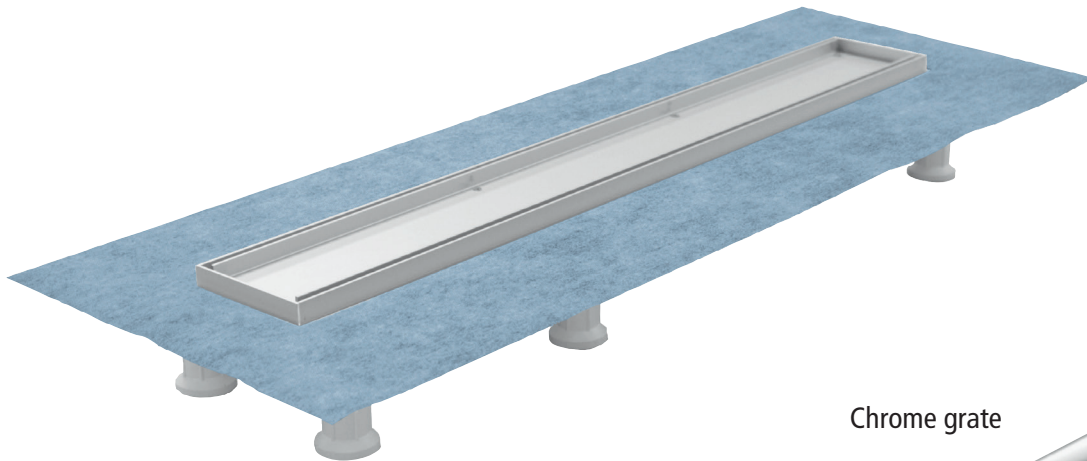


Assembly instruction

Linear drain



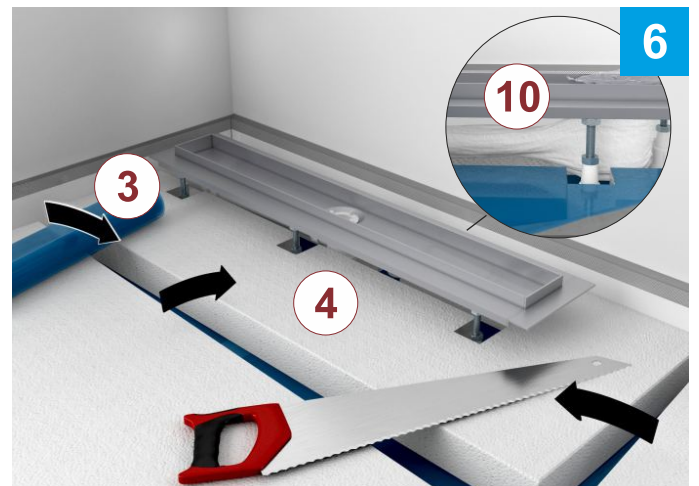
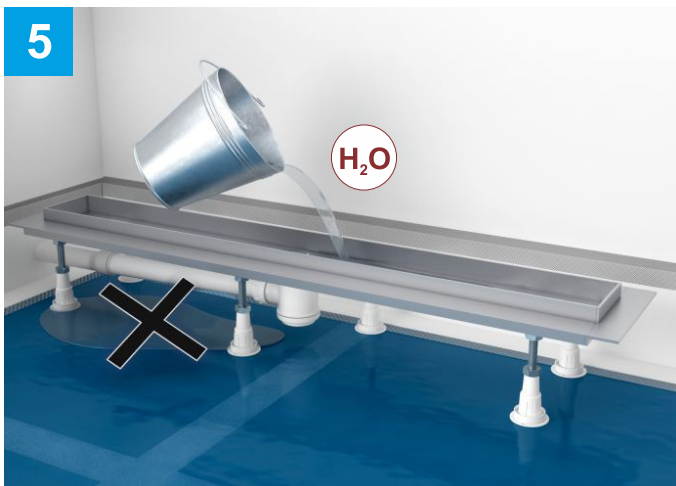
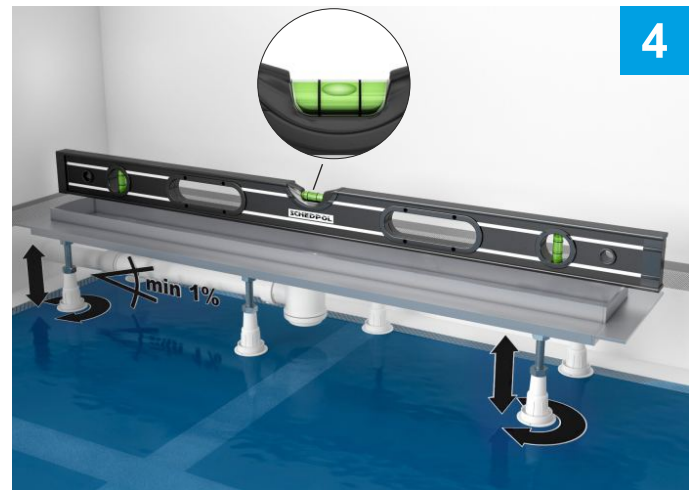
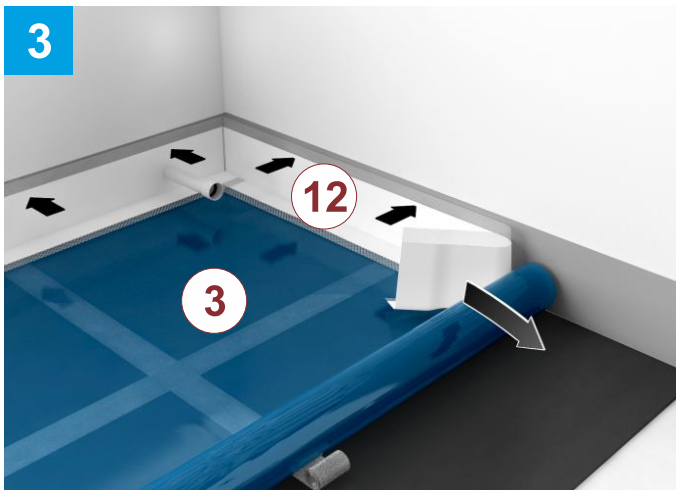
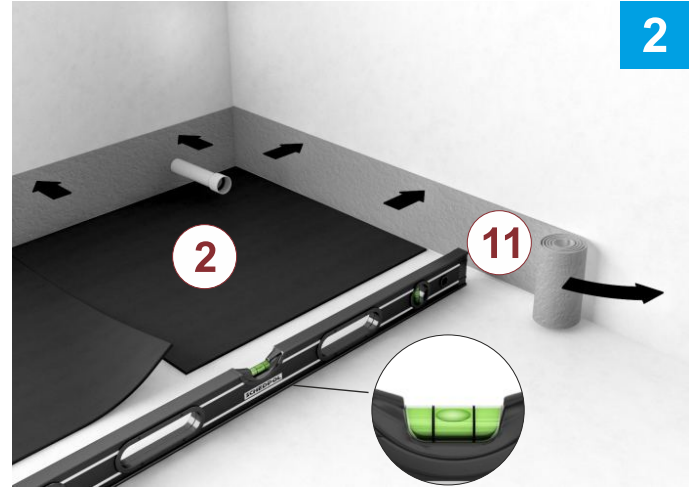
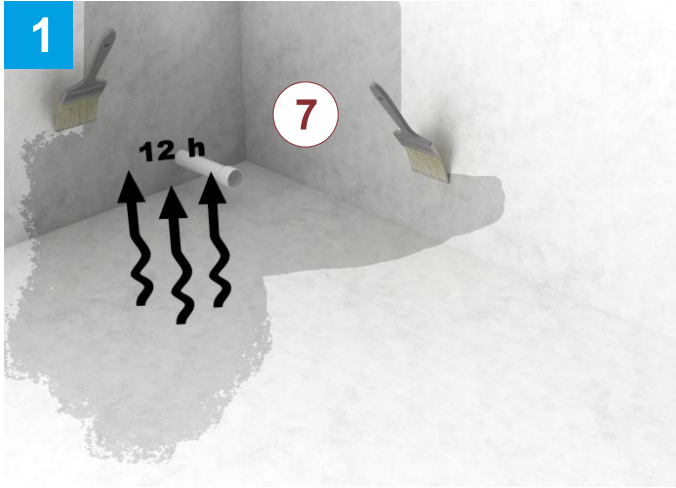
Proper sealing of the mounting surface - shown at exemplary bathroom cross-section:



1. Wall/ceiling
2. Acoustic mat
3. Polyethylene film
4. Floor insulation
5. Floor pavement (screed)
6. Membrane sealing for the linear drain
7. Liquid foil sealant
8. Gluing mortar
9. Glazed tiles
10. Acoustic insulation of the siphon
11. Acoustic insulation tape
12. Sealing tape
13. Elastic joint filler

Assembly instruction

Linear drain



Assembly instruction

Linear drain

